

AnyBackup 3.0

Quick Installation Guide

www.eisootech.com

Contents

1. What Is PowerBackup Solution?	2
2. What Does PowerBackup Solution Do?	3
3. Why PowerBackup Solution?	3
4. How to Install PowerBackup Solution?	4
4.1 Install AnyBackup 3.0 in 3 Steps	4
4.2 Detailed Instructions for Each Step	7
5. How to Use PowerBackup Solution?	11
5.1 Log into Management Console and Register Software	11
5.2 Create User and Configure User Privileges	13
5.3 Create Backup Job.....	15
5.4 Restore File, Email and Database	18
5.5 Install SRE (System Recovery Environment).....	19
5.6 Restore Operating System.....	20
6. System Requirements	23
7. Learn More.....	26

1. What Is PowerBackup Solution?

PowerBackup Solution is a disk-based network backup solution brought to you by Dell™ and Eiso™. It has been approved by thousands of enterprise users.

1) Centralized and Scalable Backup Solution

It is not only for backup of one single computer; but used to build an effective centralized backup system that protects all the computers in your business network. So it can also be easily scaled as your business grows.

2) Fast and Continuous Data Protection

It is based on fast and reliable hard disk, not slow and complicated tapes. It is also intelligent enough to backup only the changed parts of your data. And with Continuous Data Protection (CDP) technology, PowerBackup Solution protects the data as it changes in real time. This means your data is always backed up.

3) Secure and Reliable Backup Solution

PowerBackup Solution comes with built-in encryption to let you encrypt your data with AES-256 algorithm. And with Snapshot technology, PowerBackup Solution backups the data as what it is to ensure a successful restoration.

4) Easy to Use and Less Calls to IT Administrator

PowerBackup Solution is an all-in-one-web backup solution. It means that users and administrator can log in the backup system to perform backup and restoration from any web browser on any connected computer in their secure business network, with password, of course.

If users are familiar with Google online search, then they will also be comfortable with PowerBackup Solution.

2. What Does PowerBackup Solution Do?

PowerBackup Solution excels at data backup and restoration; and it also has many small useful features that make data protection easier. For a full feature list, please visit www.eisootech.com.

1) File Backup and Restore

You can use PowerBackup Solution to backup/restore individual or multiple files/folders/partitions on single or multiple computers.

2) Email Backup and Restore

You can use PowerBackup Solution to backup/restore single or multiple emails in email clients including Outlook, Thunderbird, etc., on single or multiple computers.

3) System Backup and Recovery

You can use PowerBackup Solution to backup/recover your operating systems.

4) Database Backup and Restore

You can use PowerBackup Solution to backup/restore SQL Server, Exchange Server, Active Directory, Oracle, Sybase, and Lotus Domino.

(Functions above may depend on licenses you purchased.)

3. Why PowerBackup Solution?

1) It brings control of data security for every computer in a business.

With PowerBackup Solution, IT administrator can create different backup policies for different computers. Administrator can also create users to let every people in the business to manage their own data security.

2) It saves time and increases work efficiency

PowerBackup Solution saves time of recreating lost files and rebuilding corrupted systems. Actually it is not only time saving - sometimes there is no way to get back a piece of your lost data if it had not been properly backed up.

3) It saves your IT budget.

PowerBackup Solution works with existing computing environment and it is scalable. This means you do not need to buy additional software or hardware and change your current IT environment. And it also can easily scale as the business grows.

4) It saves your IT support time

PowerBackup Solution provides a centralized and complete protection for all computers in a business. And it is also so easy to use for common users that backup and restoration becomes as easy as browsing webpage.

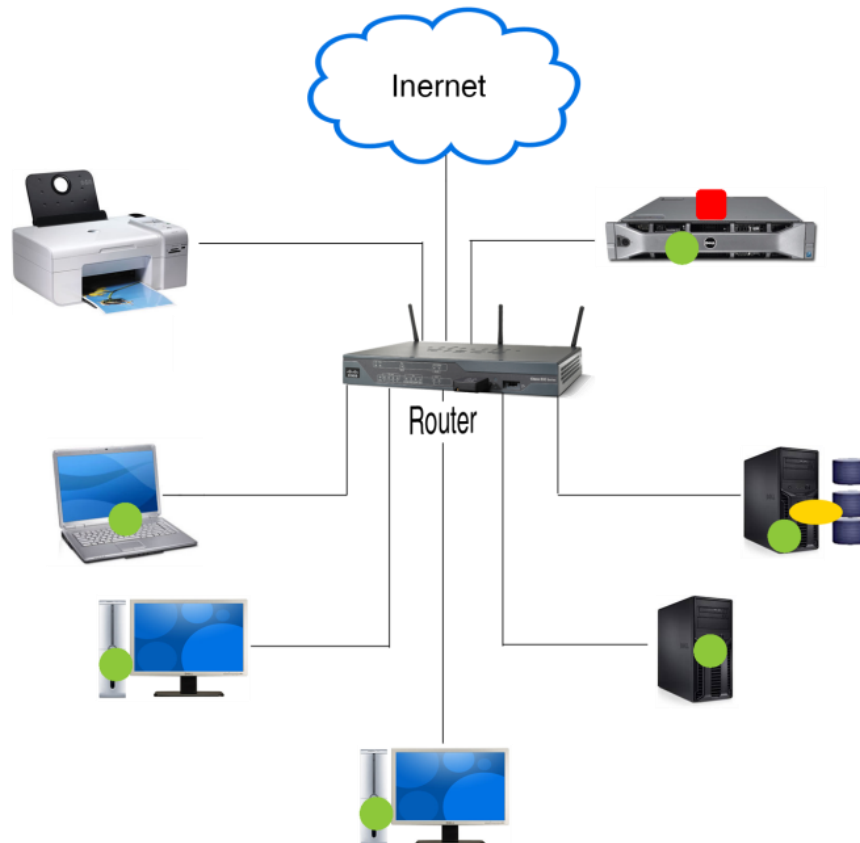
4. How to Install PowerBackup Solution?

PowerBackup Solution is powered by Eisoo™ AnyBackup 3.0 backup software.

4.1 Install AnyBackup 3.0 in 3 Steps

- 1) Install Management Console on a server which is to be the central Backup Server;
- 2) Install Client Agent on each computer needs to be protected;
- 3) (Optional) Install Media Server Agent on a server to be additional Media Server, and install other tools like LDAP Assistant to integrate LDAP and System Recovery Environment to recover system (no necessary for system backup).

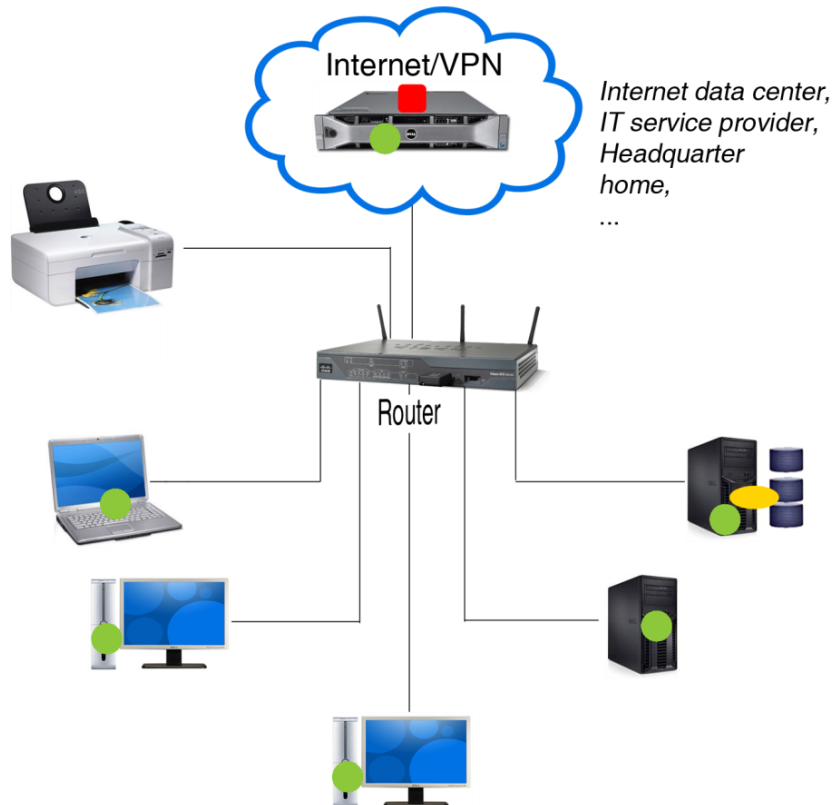
PowerBackup Solution Architecture Overview (1)



- Install Management Console on a server (dedicated or shared). This server will then be called Backup Server, accessible by every computer in the network. It will serve as a central server to control all tasks and host data backed up.
- Install Client Agent on every computer needs to be backed up. It is used to backup and restore data of the computer it resides on.
- (Optional) Install Media Server Agent on a server (dedicated or shared). This server will then be called Media Server, accessible by every computer in the network. It will serve as additional place to host data backed up.

PowerBackup Solution is also ideal for Disaster Recovery:

PowerBackup Solution Architecture Overview (2)

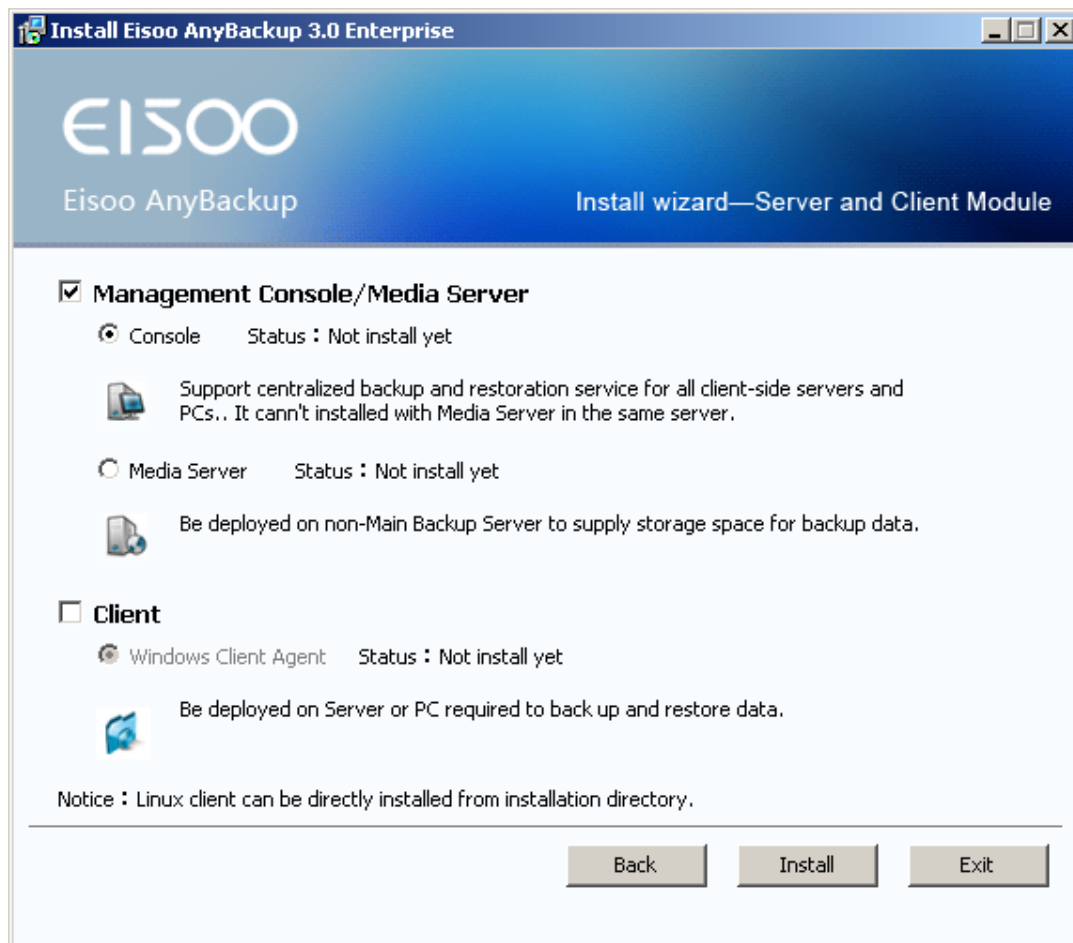


- Install Management Console on a server (dedicated or shared). This server will then be called Backup Server, accessible by every computer in the network. It will serve as a central server to control all tasks and host data backed up.
- Install Client Agent on every computer needs to be backed up. It is used to backup and restore data of the computer it resides on.
- (Optional) Install Media Server Agent on a server (dedicated or shared). This server will then be called Media Server, accessible by every computer in the network. It will serve as additional place to host data backed up.

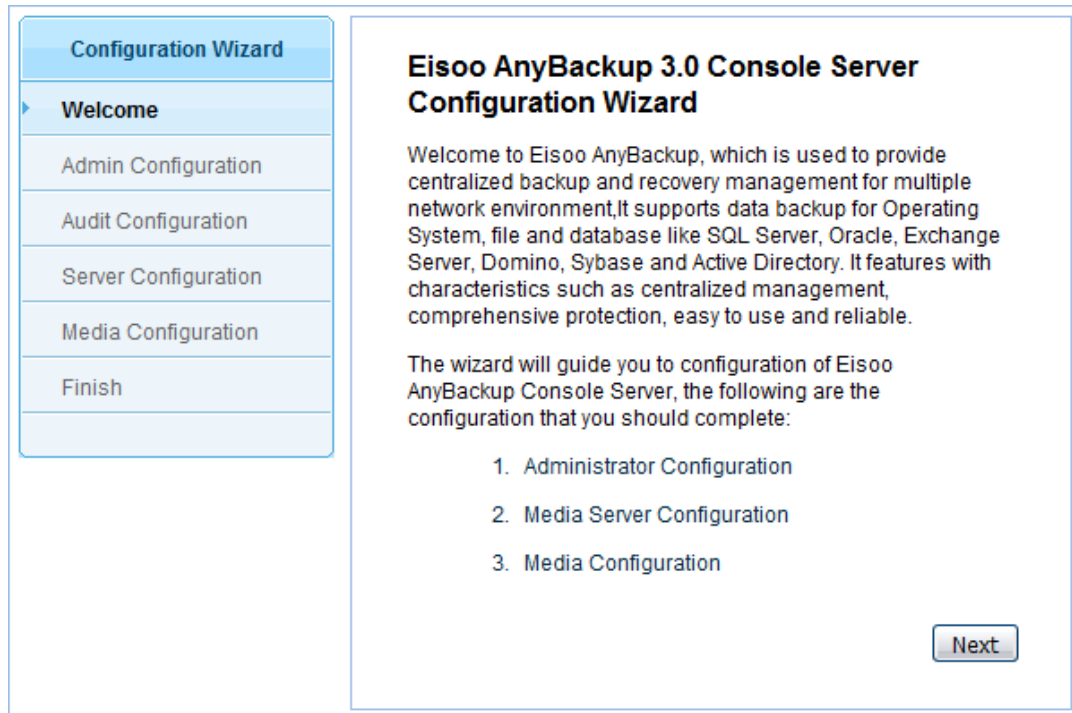
4.2 Detailed Instructions for Each Step

4.2.1 Install Management Console

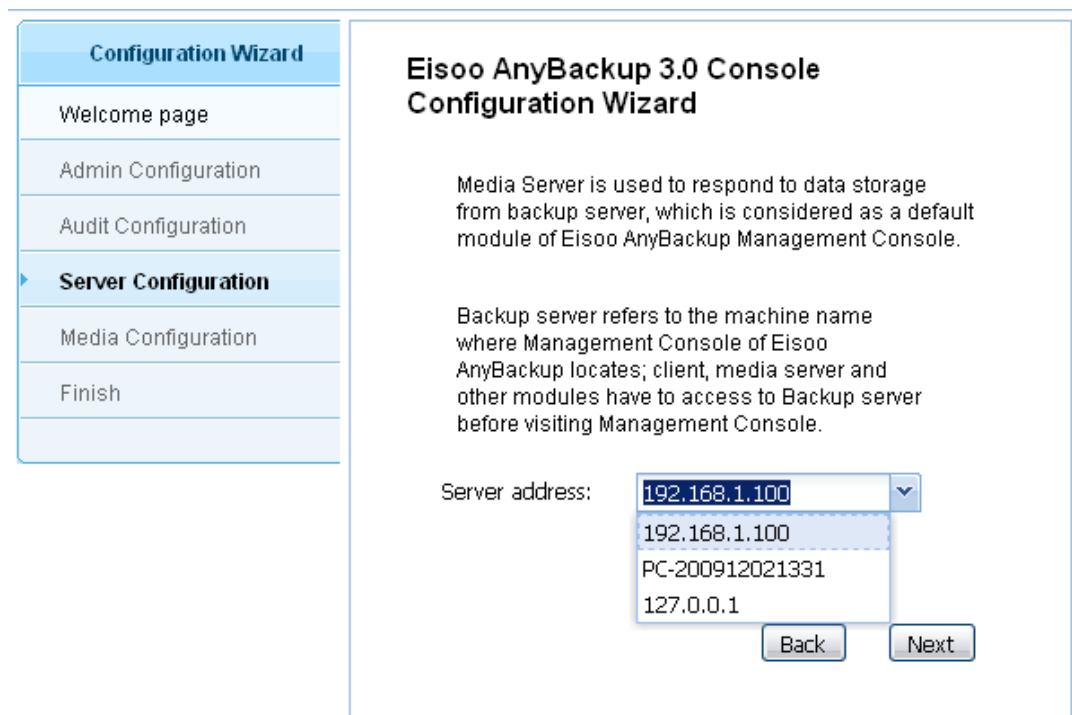
- 1) Insert the installation CD into the CD/DVD Drive; double click setup.exe to start the installation wizard. Click **Install Management Console/Media Server and Client Modules**, select **Management Console**, and follow the instructions to finish the installation.



- 2) **Eisoo AnyBackup 3.0 Console Server Configuration Wizard** will pop out when installation finishes.



- 3) Choose the current IP address for the server. This IP address is also used by Client Agent, Media Server Agent and other components to connect the Backup Server.



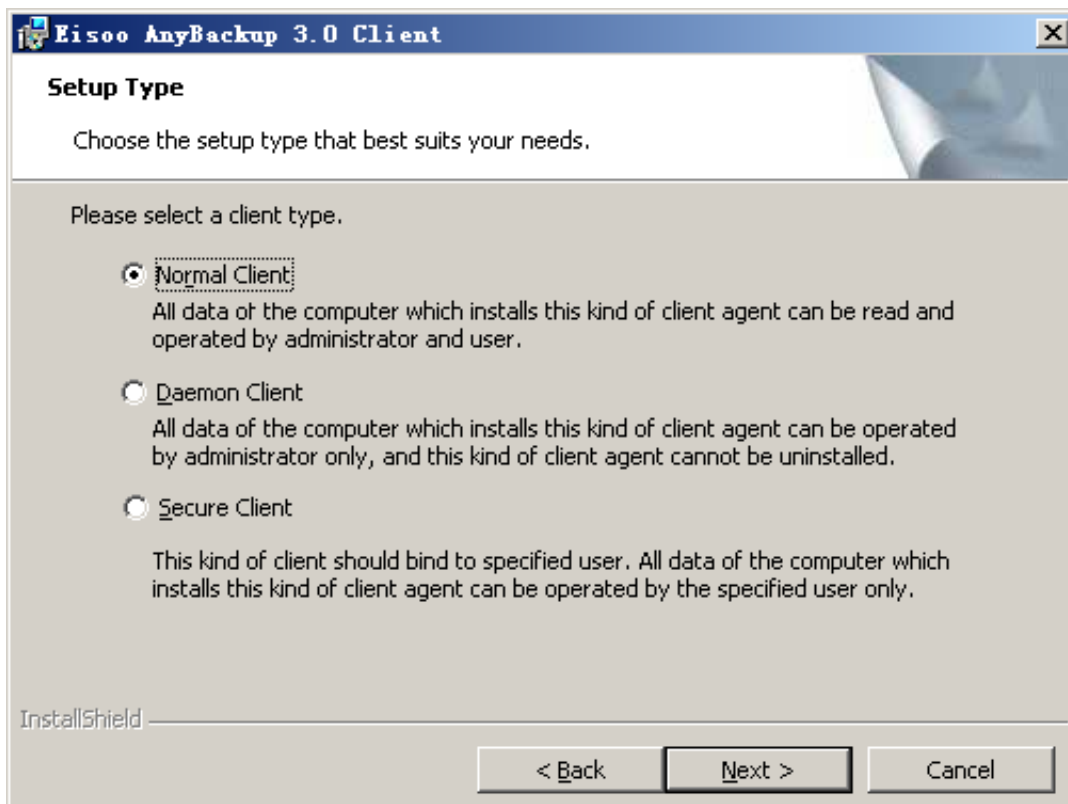
Note: Please turn off Windows Firewall before installation or open the following port number: 9800, 9801, 9900, 9901, and 9902.

4.2.2 Install Windows Client Agent

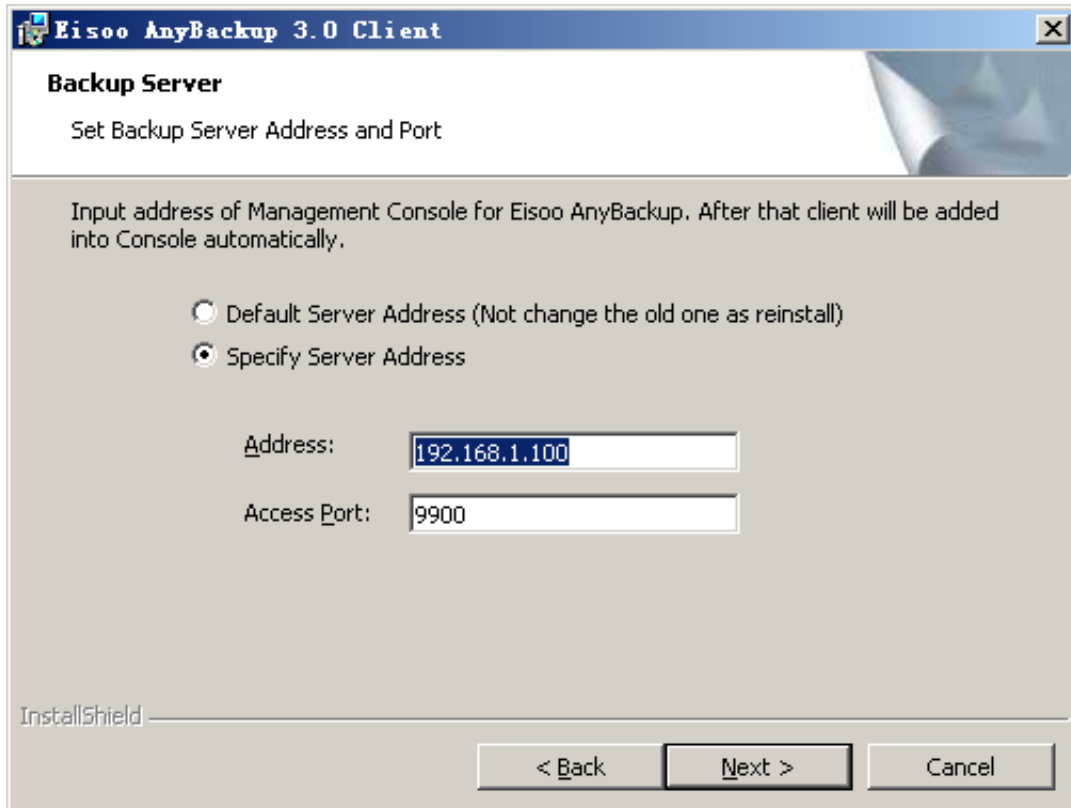
- 1) Visit Management Console from web browser (Internet Explorer or Firefox) at **http://192.168.1.100:9800** (replace the IP address 192.168.1.100 with IP address of your own Backup Server), click **Download and Install Windows Client** under the login box to download the installation package (**netclient.exe**), when finished, double click it to start the installation.



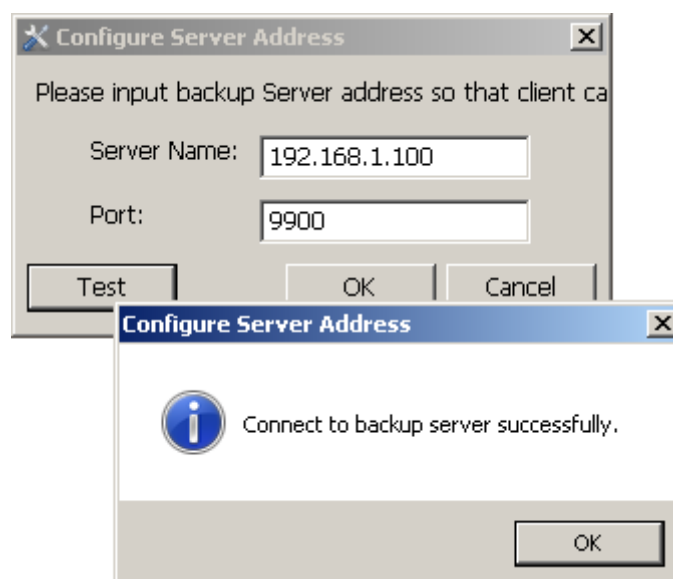
- 2) In the **Setup Type** dialog box, select the client type you want to install among **Normal Client**, **Daemon Client** and **Secure Client**.



- 3) Choose **Specify Server Address**. Input the Backup Server address configured above in 4.2.1 as 192.168.1.100 (replace the IP address 192.168.1.100 with IP address of your own Backup Server).



- 4) After the installation of client, if you want to change the Backup Server Address, click **Start > All Programs > Eisoo AnyBackup > 3.0 Client**, click **Set Server Address** and then input the new IP address for Backup Server.



Note: To install the Media Server Agent and LDAP Authentication Assistant,

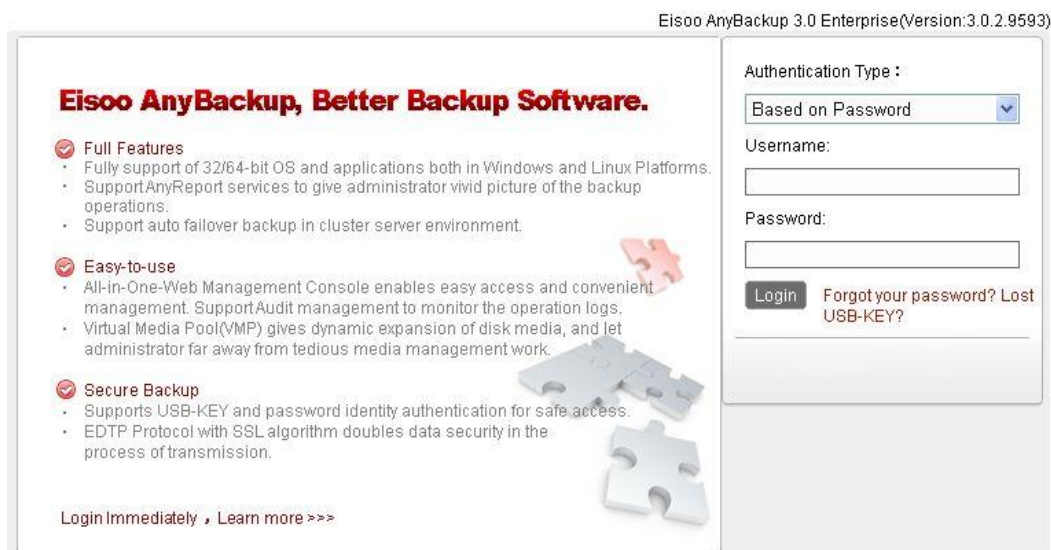
please refer to detailed user manual included in the CD or download a latest copy at www.eisootech.com.

5. How to Use PowerBackup Solution?

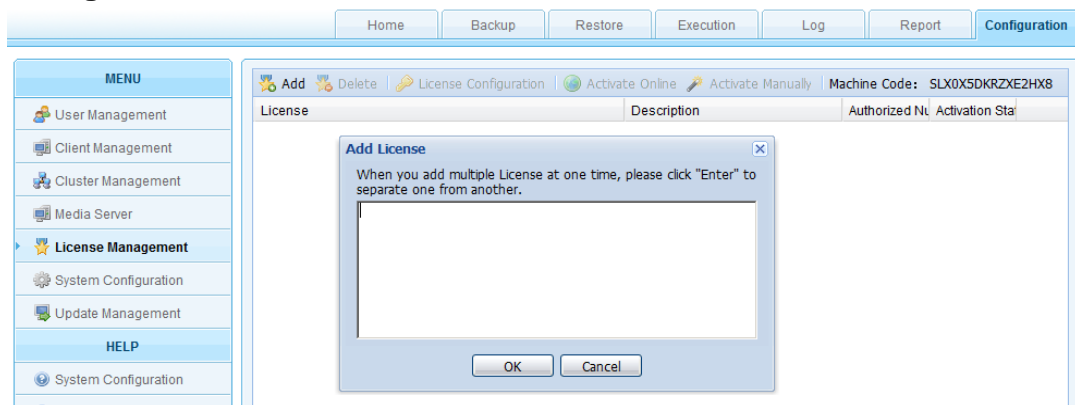
5.1 Log into Management Console and Register Software

Software

- 1) Visit <http://192.168.1.100:9800> from web browser, "192.168.1.100" is the IP address of backup server (replace it with your own), and "9800" is the default port (do NOT change it). Log into Management Console using the username/password you configured (Default: admin/123456).



- 2) In Management Console, click **Configuration** tab, click **License Management** on the left sidebar. You can add and activate licenses here.



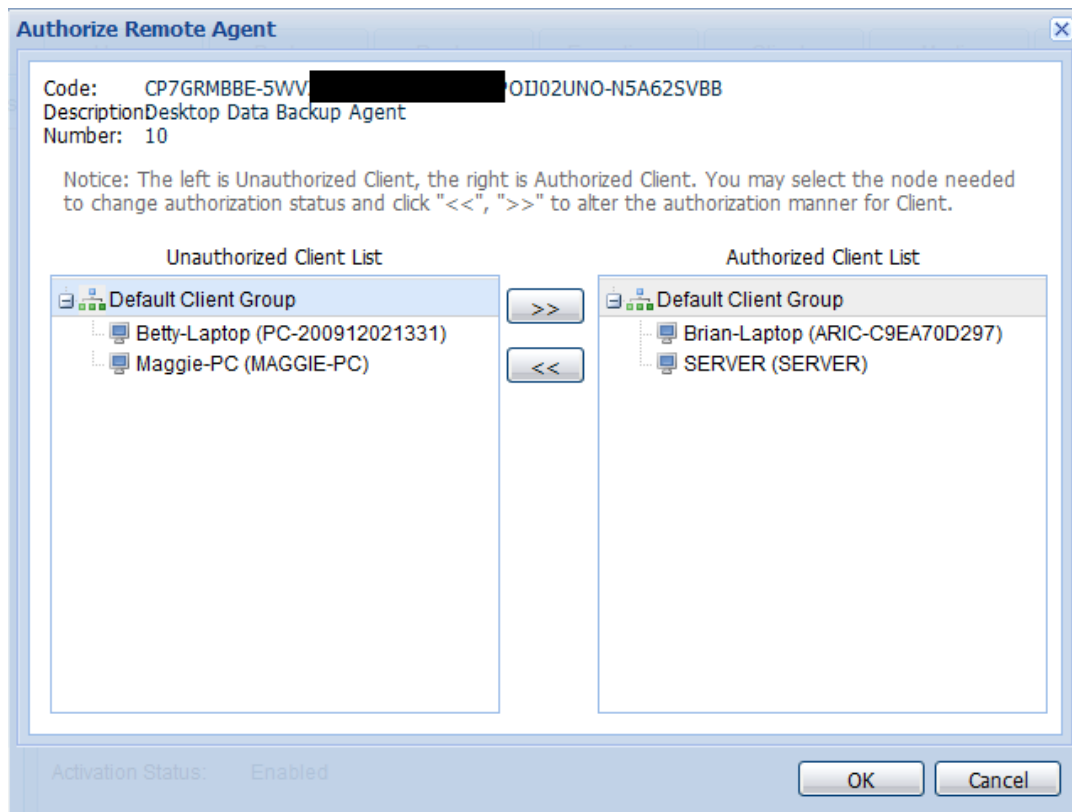
- 3) **[Important]** Authorizing Clients: Before performing the first backup job for any Client Agent, one more step is critical: authorizing the Client Agent with relevant license, e.g. authorizing a server Client Agent (running on server operating system like Windows 2003/2008, or Linux) with license for Server Data Backup Agent, authorizing a Desktop Client Agent (running on desktop operating system like Windows XP/Vista/7) with license for Desktop Data Backup Agent, etc.

To enable backup for server Client Agent, click on license for Server Data Backup Agent, then click on **License Configuration**. A new window will pop up with a list of Client Agents. Select the Client Agents to be authorized.

To enable backup for desktop Client Agent, click on license for Desktop Data Backup Agent, and follow the above steps.

Do the same to authorize Client Agent with Oracle/Sybase/Lotus Domino Backup Agent (if you purchased).

Similarly, authorize Media Server Agent in the same way.



Notes:

- a) At first, please input and activate the license for Basic Pieces for Enterprises,

and then other licenses can be input all together.

b) If Backup Server is not connected to the Internet, please activate manually. The activation code can be obtained from Eisoo customer service at www.eisootech.com.

5.2 Create User and Configure User Privileges

Notes:

a) Function of configuring user accounts and permissions is to allow staff to manage backup without administrator's interference. Administrator log into the Management Console to create normal user and authorize operation privileges for them and then staff can log into the Management Console as client to backup and restore data.

b) If only administrator has the right to backup all the data in enterprises, then the procedures of creating user and configuring user privileges can be omitted.

c) Admin has the highest privilege, with right to manage all non-secure clients, use all media, strategies and operation privileges.

d) If you have installed secure client, you can configure client bundled with an exclusive user in the 3rd step.

1) Click **Configuration > User Management**, and then you can create new user here.

Create User

User Name:

Description:

User Group: Default user group

Authentication Type: Based on Password

Re-initialize USB-Key

Space Limit (GB):

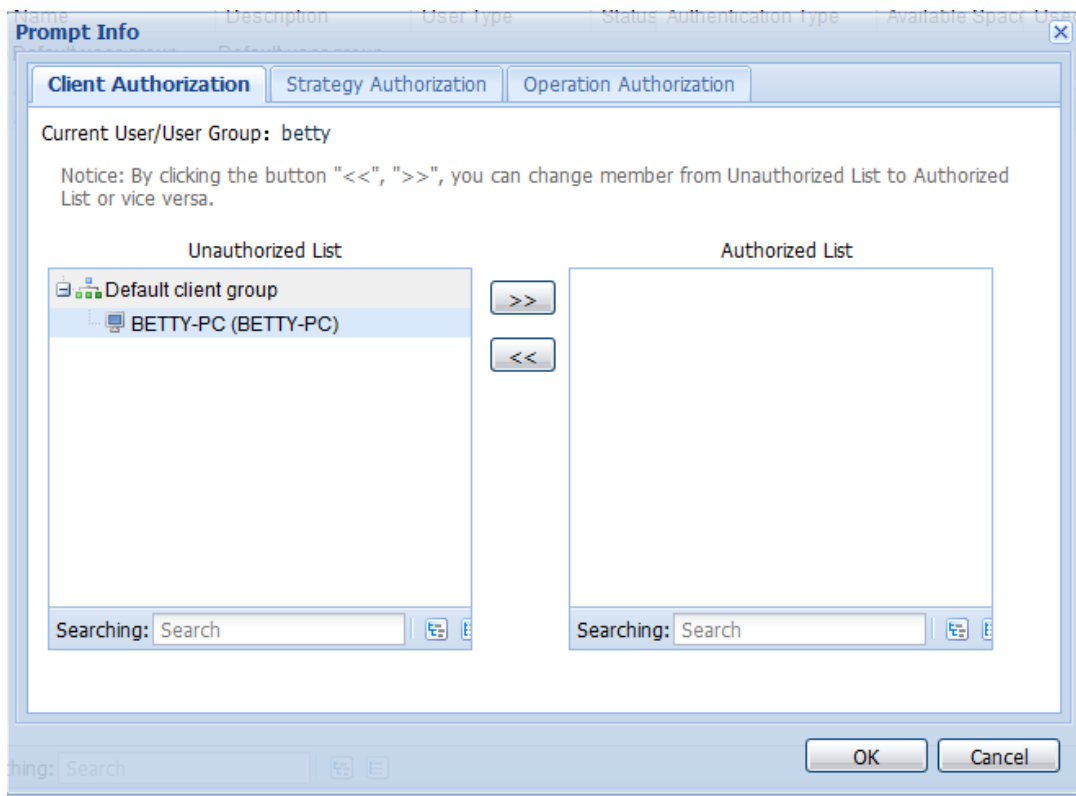
No limit of user space

Notice :

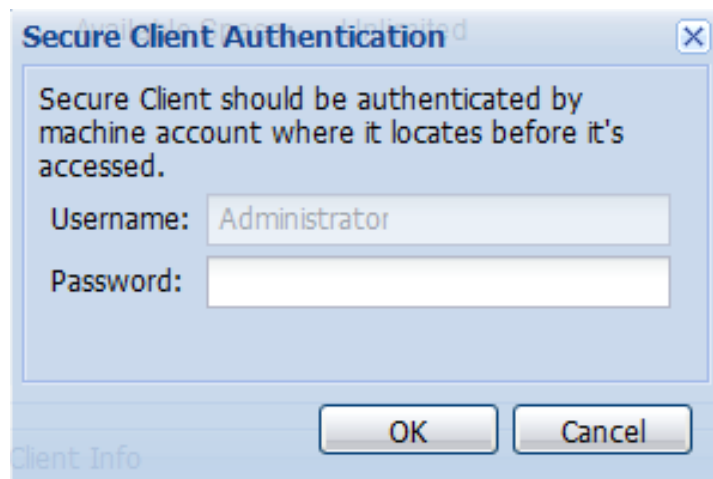
- Initial Password is "123456". Password can be modified after user login by clicking "/Modify Password"/.

OK Cancel

- 2) Select a user, and click **Permission** to authorize the user with specific access to backup and restore specified clients' data, create backup jobs using strategy etc.

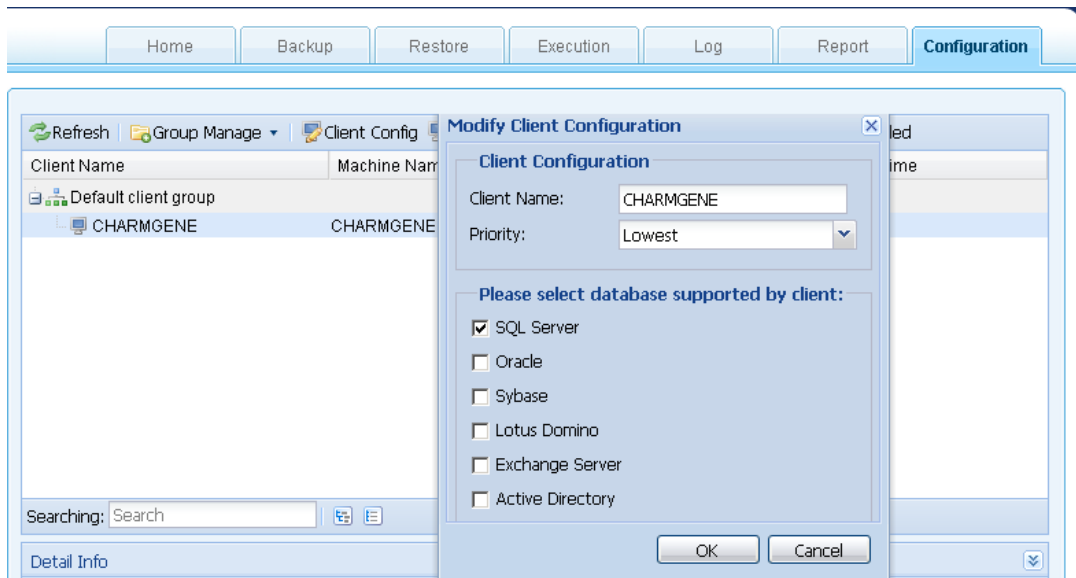


- 3) Authorization of the privilege to read and write data for secure client is realized by binding appointed user. Login as this user, the right corner of the home page is the client information which displays the detailed client information. Click **ID Authentication** in which you should input the Username and Password of the computer where Secure Client is installed (The username is default as administrator to prevent abuse of computer users). Click **OK** to finish user binding; click **Cancel** to stop it and back to Home Page.

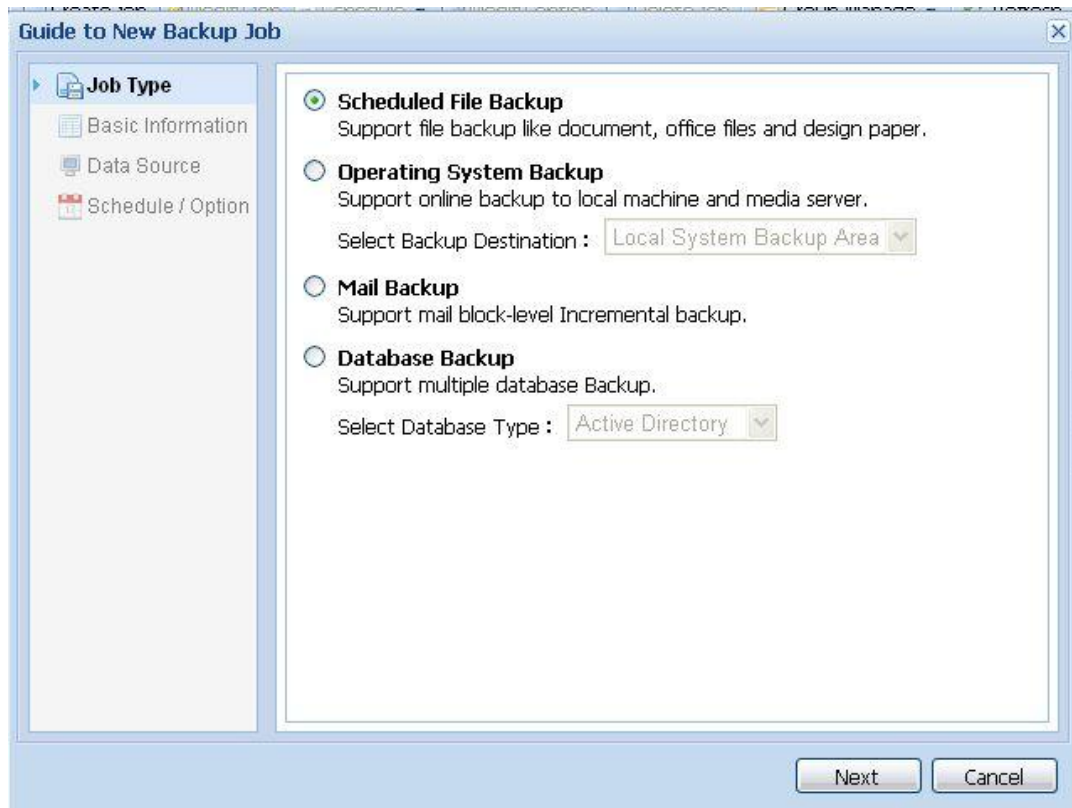


5.3 Create Backup Job

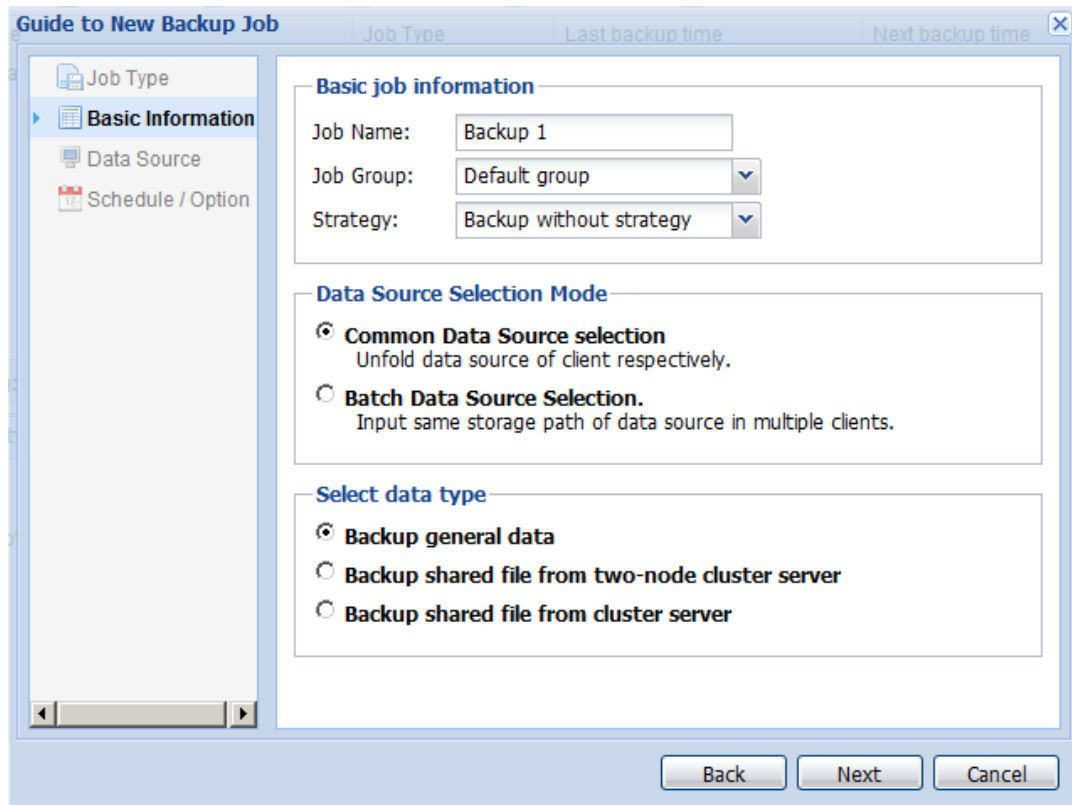
- 1) If those data needing backup is database, you should configure client: choose the database types to be supported by the client.



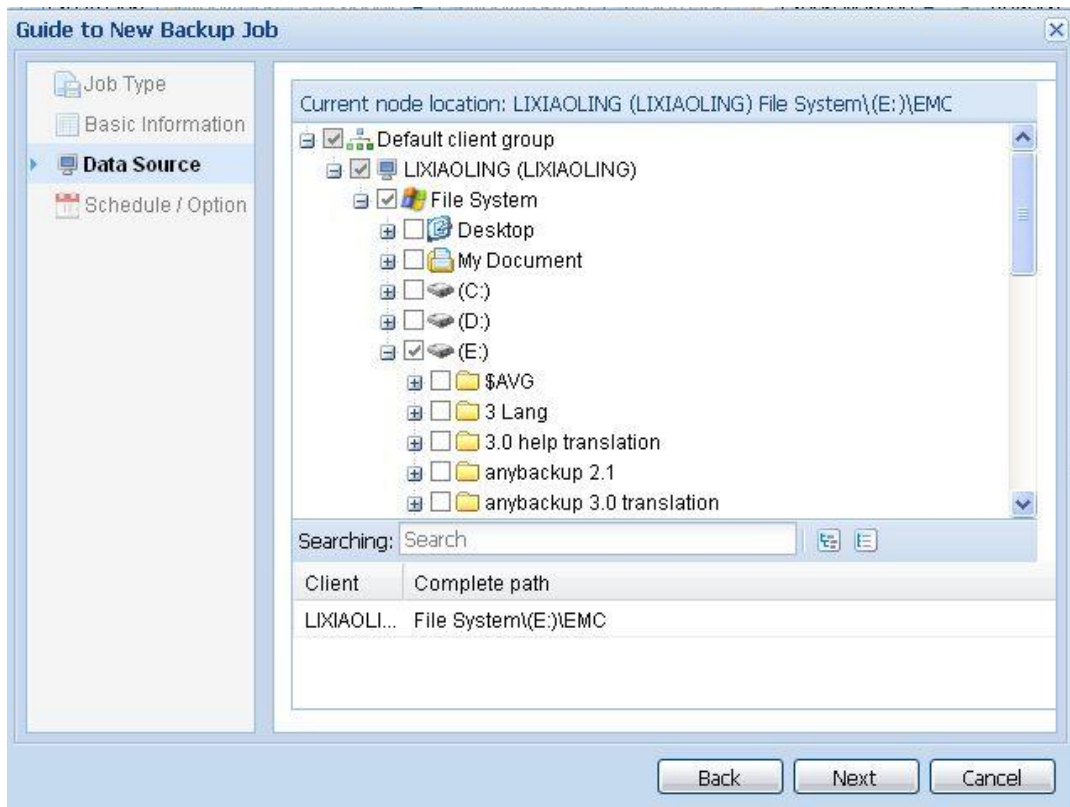
- 2) After the configuration of client, log into Management Console as administrator or specified user. Click **Backup > Create job**. In the dialog box [Guide to New Backup Job], select job type you want. If you choose **Scheduled File Backup** or **Mail Backup**, click **Next** to decide the data source selection mode; if you choose **Database Backup**, click **Next** to select between SQL Server Backup, Exchange Server Backup, Oracle Backup, Sybase Backup, Lotus Domino Backup and Active Directory Backup, and then click **Create**. If you choose **Operating System Backup**, please select backup destination which are Media Server and Local System Backup Area.



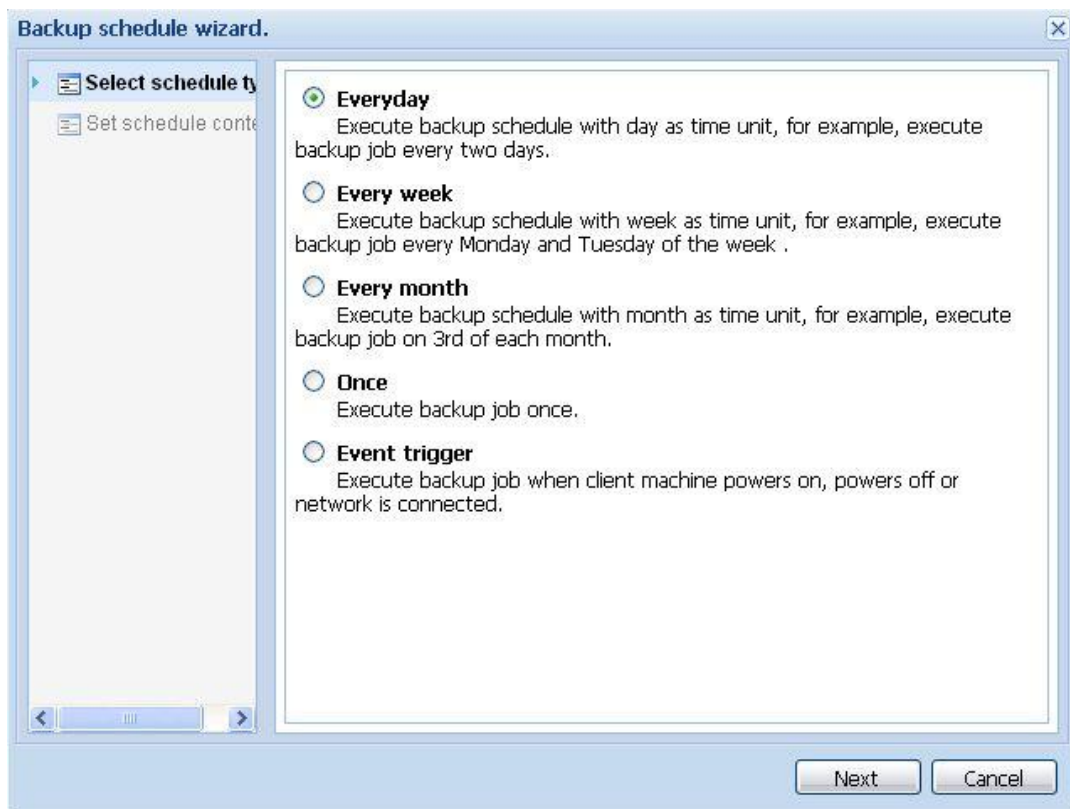
- 3) Configure Backup Job Name, Group, Backup Strategy, Data Sources Select Mode and Data Type in the dialog box [Basic Information].



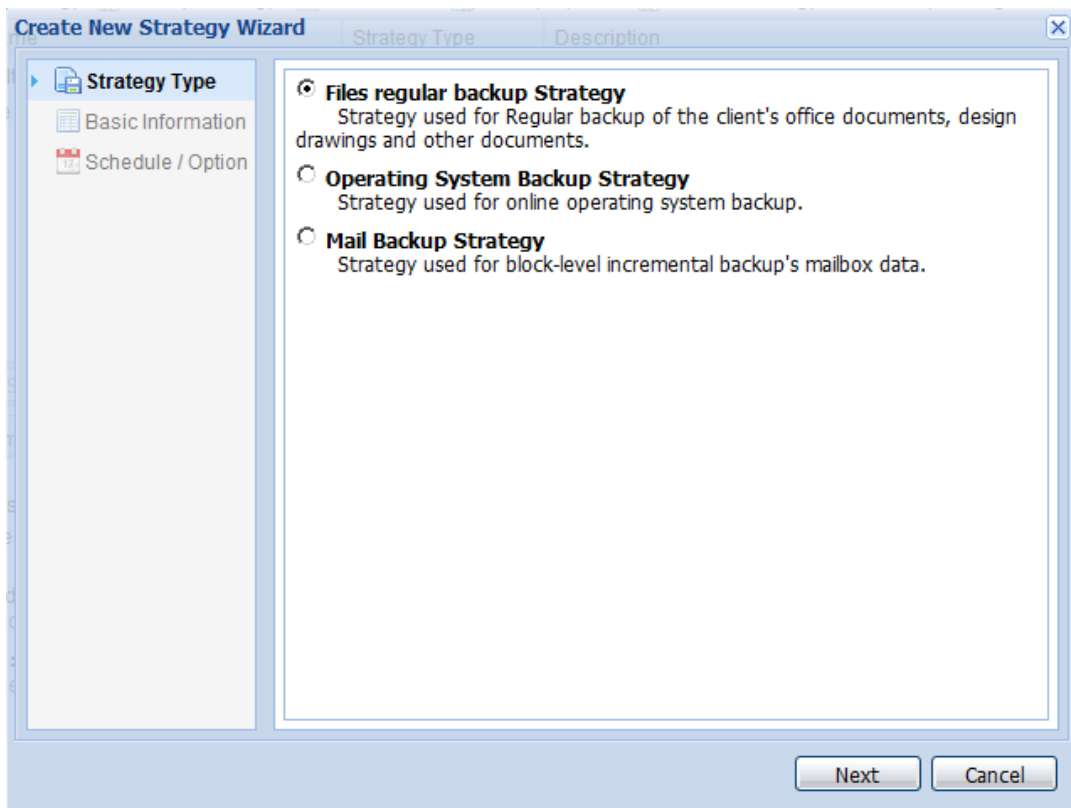
4) Click **Next** to choose the client, expand and select client data sources.



5) Click **Next** to configure job schedule and Option. Click **Add > Select Schedule Type**. Job Schedule Type includes Daily, Weekly, Monthly, Just for Once and Event Trigger.



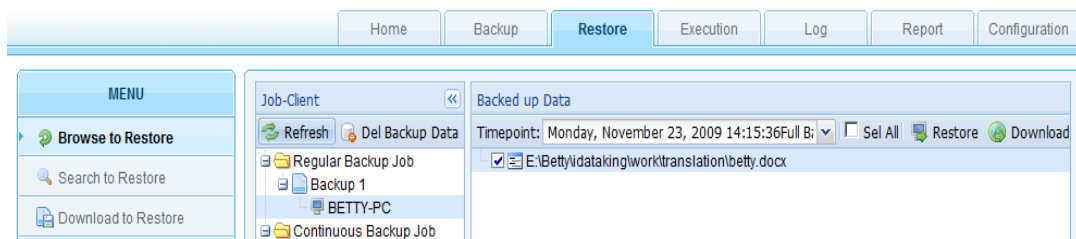
- 6) Log into Management Console as administrator, create backup strategy and authorize specified client with backup strategy.



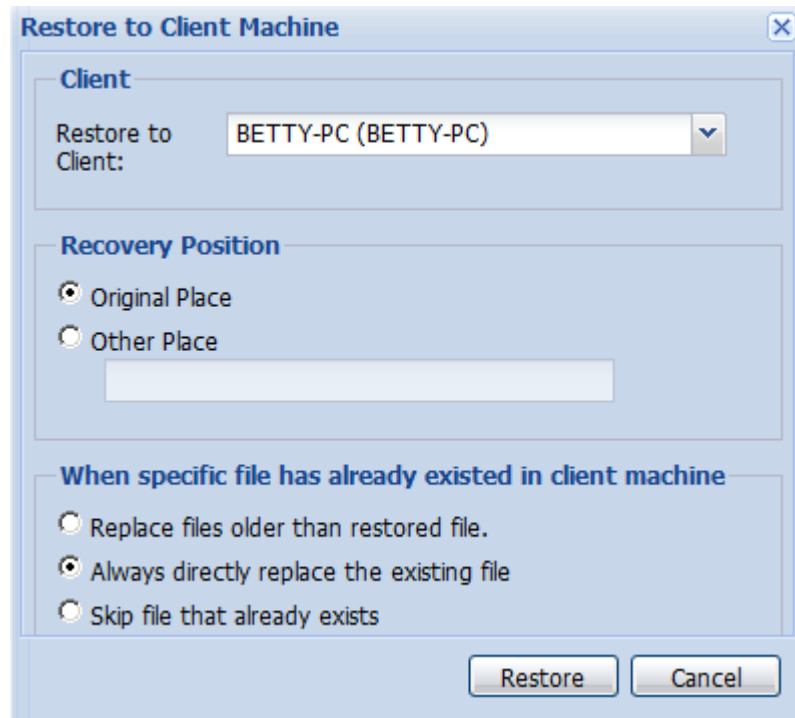
- 7) Eisoo users can backup data with authorized strategy, without considering backup strategy problem.

5.4 Restore File, Email and Database

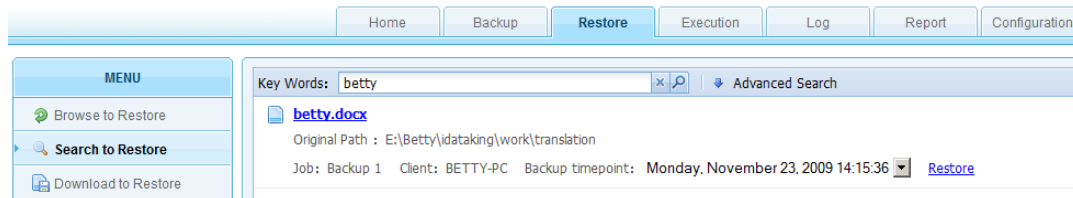
- 1) Log into management console as administrator or user, click **Restore** and select specified client with files to be recovered. Click the drop-down menu under **Job-Client** to select the job to be restored, and select the job and time point.



- 2) Data can be restored to specified client or downloaded in a zipped file.



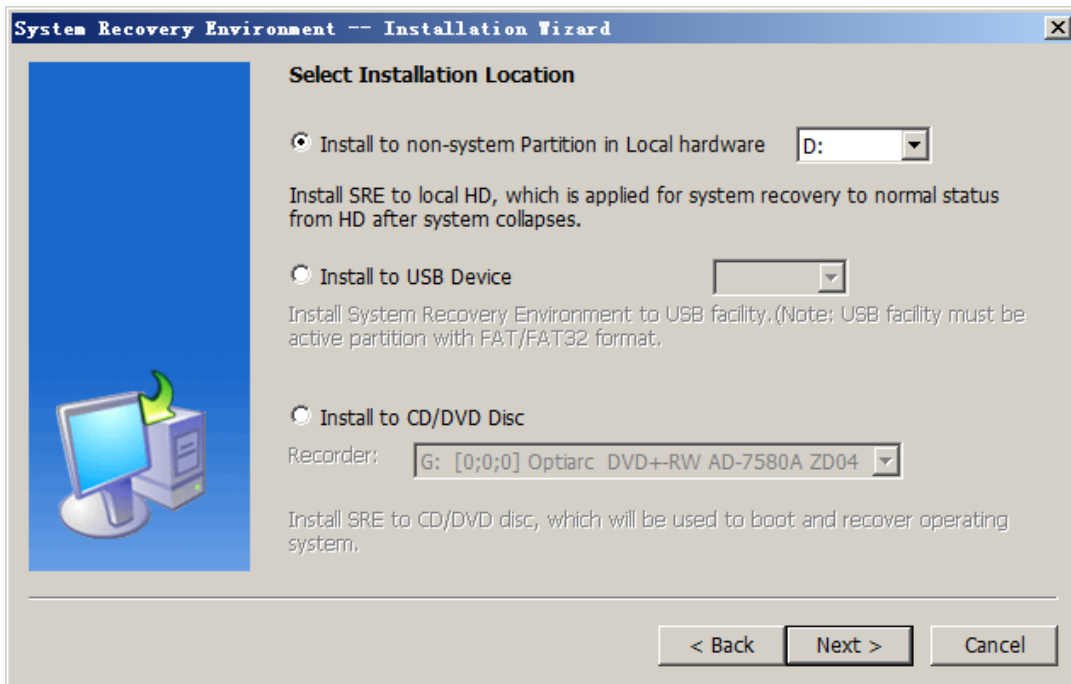
- 3) Click **Search to Restore**. Input the key words in the search box and click search icon to search for backup data. When files matching the key words pop up, verify the specified data and select **Time point**. Then restore it to current client or specified client.



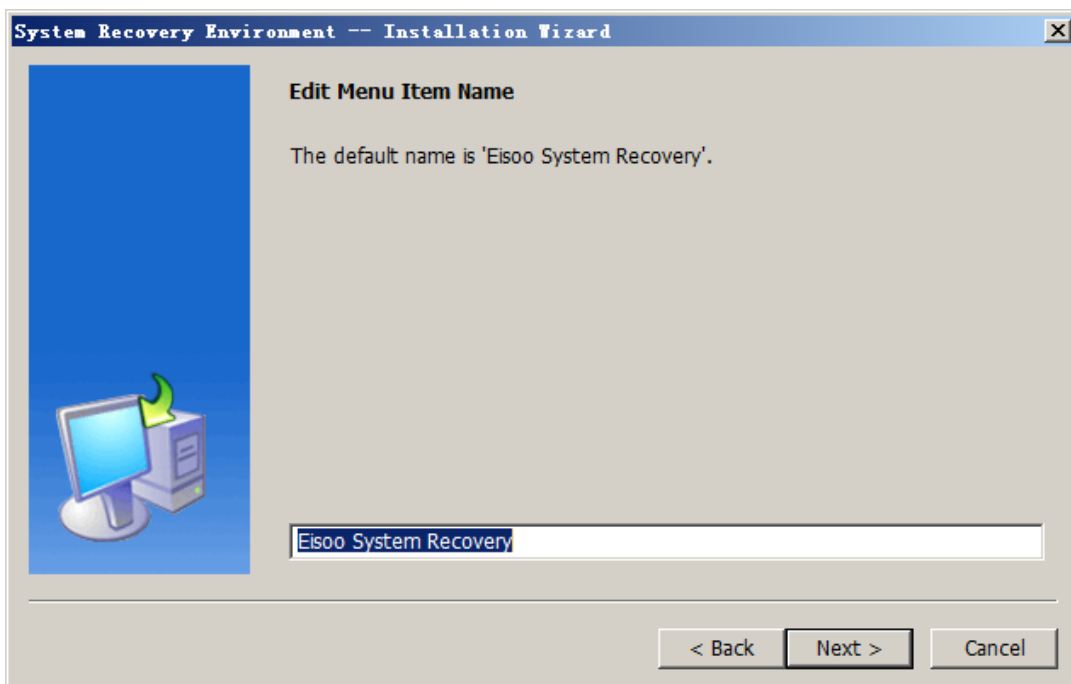
5.5 Install SRE (System Recovery Environment)

To recover corrupted operating system, you need to install SRE, an independent Linux based bootable operating system. You can also boot into SRE from the software CD labeled *PowerBackup Solution Lite/Standard/Professional*. If you've got the CD, please skip this step.

- 1) Log into Windows operating system and start Eisoo AnyBackup 3.0 setup file. Click **Install Auxiliary Module**, and choose **System Recovery Environment** to install. Enter [System Recovery Environment --Installation Wizard], and follow the wizard to operate. You can install SRE to local hard drive, USB disk or CD/DVD.



- 2) Input a name (default name is Eisoo System Recovery) for the SRE and click **Next**. Then, follow the wizard to finish installation. The name will be shown when the computer boots up.



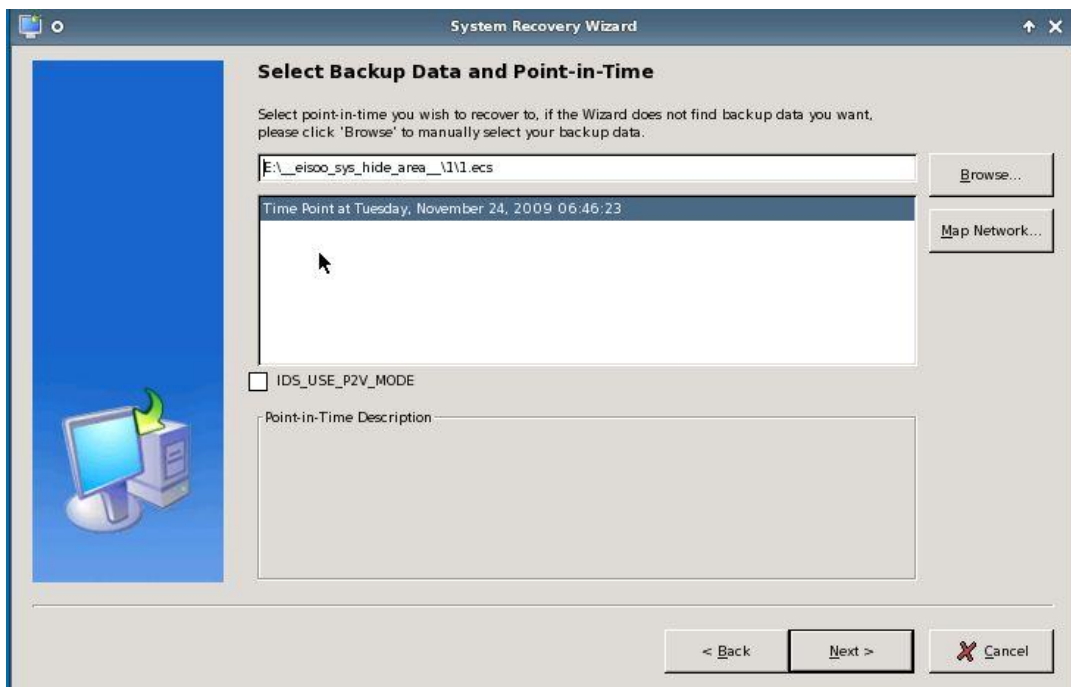
5.6 Restore Operating System

Boot into Eisoo SRE (from local hard drive, USB Disk or CD/DVD where you installed SRE). Recover the system by selecting **Recover from Local or Windows Shared Network** or **Recover from Backup Server**.

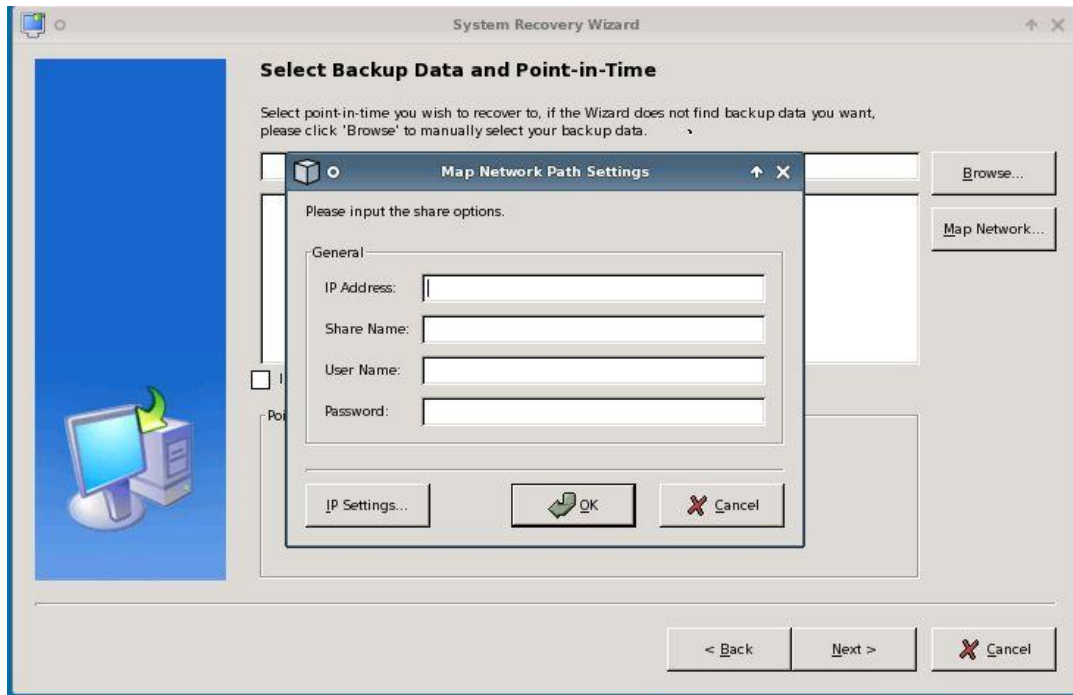


Recover from Local or Windows Shared Network:

- 1) Select **Recover from Local or Windows Shared Network** ,in the popped-up window [Select Backup Data and Point-in-Time], click **Browse...** select the catalog set to recover the system from the local hardware or a shared network folder.

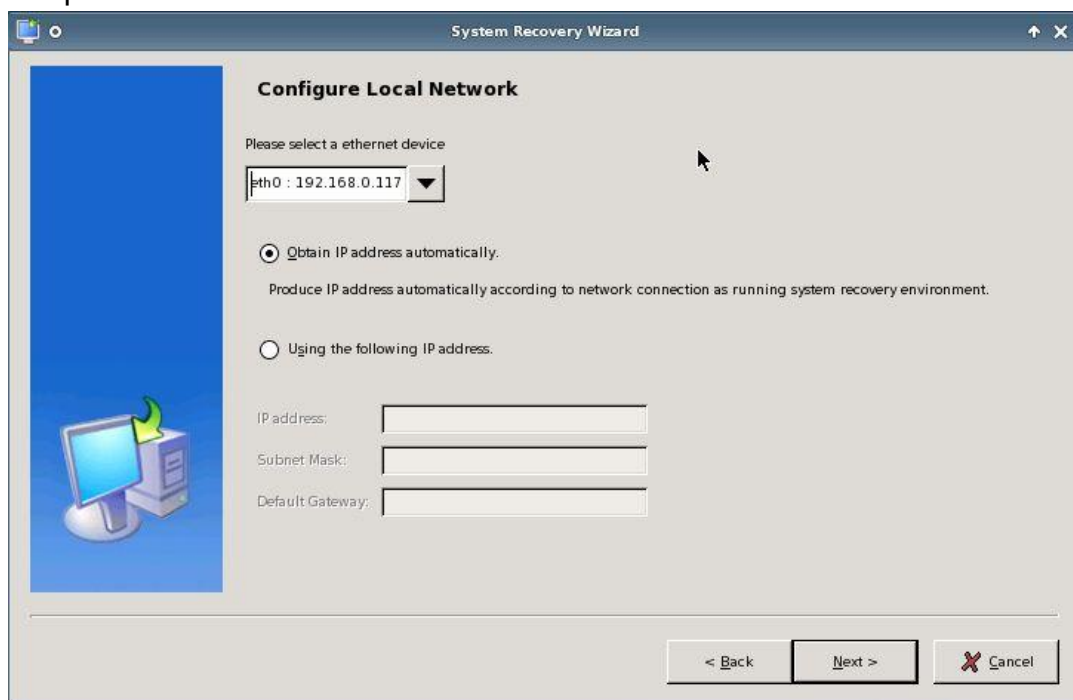


- 2) Click **Map Network** to recover the system from shared network folder. In popped-up dialog box [Map Network Path Settings], you can configure the network settings, like IP addresses, for the Media Server and the specified client whose system is required to be recovered, to recover system from remote Media Server.



Recover from Backup Server:

- 1) Back to **Welcome to Eisoo System Recovery Wizard**, and select **Recover from Backup Server** where the backup set for the operating system is stored. First you have to configure local network IP address to ensure that it connects to Backup Server, you can select **Obtain IP address automatically** or **Using the following IP address** and manually input the network information.



- 2) Then click **Next** to enter **Configure Backup Server** in which you can input server address, port, enterprise name, login name and password.

6. System Requirements

1) 32-bit Management Console & Media Server

Item	Minimum	Recommended
CPU	Intel Pentium 4	Intel Pentium Dual or above
Memory	1GB	2GB
Installation disk space	500MB	100GB or more to host data backed up
Operating System	Windows 2000 SP1 or above, Ubuntu6.04, SUSE Linux10, RedHat Enterprise Linux 4, RedFlag 4, Fedara 4	Windows 2003 or above, RedHat Enterprise Linux 4, SUSE Enterprise 10
Browser	IE 7.0 or Firefox 2.0	Firefox2.0

2) 64-bit Management Console & Media Server

Item	Minimum	Recommended
CPU	Intel Pentium 4	Intel Pentium D or higher
Memory	1GB	2GB
Installation disk space	500MB	100GB or more to host data backed up
Operating System	Windows XP(64-bit) or above	Windows 2003 (64-bit)
Browser	IE 7 or Firefox 2.0	Firefox 2.0

3) 32-bit Windows Client Agent

Item	Minimum	Recommended
CPU	900MHz	1.2GHz or higher
Memory	512MB	1GB or more
Installation disk space	100MB	500MB
Operating System	Windows 2000 SP1 or above	Windows XP, 2003
SQL Server	SQL Server 2000, 2005	SQL Server 2000, 2005
Exchange Server	Exchange Server 2003, 2007	Exchange Server 2003, 2007
Sybase	Sybase 12.0 or above	Sybase 12.0 or above
Oracle	Oracle 8i, 9i, 10g	Oracle 8i, 9i, 10g
Domino	Lotus Domino R5, R6, R7, R8 or later	Lotus Domino R5, R6, R7, R8 or above
Active Directory	Windows 2003 or above	Windows 2003 or above

4) 64-bit Windows Client Agent

Item	Minimum	Recommended
CPU	900MHz	1.2GHz or higher
Memory	512MB	1GB or more
Installation disk space	100MB	500MB
Operating System	Windows XP(64-bit) or	Windows 2003 (64-bit)

	above	
SQL Server	SQL Server 2000, 2005	SQL Server 2000, 2005
Exchange Server	Exchange Server 2003, 2007	Exchange Server 2003, 2007
Sybase	Sybase 12.0 or above	Sybase 12.0 or above
Oracle	Oracle 8i, 9i, 10g	Oracle 8i, 9i, 10g
Domino	Lotus Domino R5, R6, R7, R8 or above	Lotus Domino R5, R6, R7, R8 or above
Active Directory	Windows 2003(64-bit) or above	Windows 2008(64-bit)

5) 32-bit Linux Client Agent

Item	Minimum	Recommended
CPU	900MHz	1.2GHz or higher
Memory	512MB	1GB or more
Installation disk space	100MB	500MB
Operating System	RedHat Linux Enterprise 4.0 Fedora Linux 4.0 SUSE Linux 10.0 RedFlag Linux 4.0 Ubuntu Linux 6.04	RedHat Linux Enterprise 4.0 Fedora Linux 5.0 SUSE Linux 10.0 RedFlag Linux 4.0 Ubuntu Linux 6.04
Oracle	Oracle 9i, 10g	Oracle 9i, 10g

6) 64-bit Linux Client Agent

Item	Minimum	Recommended
CPU	900MHz	1.2GHz or higher
Memory	512MB	1GB or more
Installation disk space	100MB	500MB
Operating System	RedHat Linux Enterprise 4.0(64-bit) Fedora Linux 4.0(64-bit) SUSE Linux 10.0(64-bit) RedFlag Linux 4.0(64-bit) Ubuntu Linux 6.04(64-bit)	RedHat Linux Enterprise 4.0(64-bit) Fedora Linux 5.0(64-bit) SUSE Linux 10.0(64-bit) RedFlag Linux 4.0(64-bit) Ubuntu Linux 6.04(64-bit)
Oracle	Oracle 9i, 10g(64-bit)	Oracle 9i, 10g(64-bit)

7) LDAP Assistant

Item	Minimum	Recommended
CPU	900MHz	1.2GHz or higher
Memory	512MB	1GB or more
Installation disk space	50MB	200MB
Operating System	Windows XP or above	Windows 2003

7. Learn More

This hand book is for a quick installation purpose only. You can find a detailed user manual in the CD. You are also encouraged to visit our technical support website: www.eisootech.com.

Thank you!

©2003-2009 Eisoo Technology Company Limited. All Rights Reserved.